



Technical Data Sheet

Product Name: 0805 High Bright White Chip LED

Part Number: HQ17-2102UWC

Customer: _____

Customer PN: _____

Version: A.2

Date: 2015-10-15

Customer Approval		

Instituted By: _____ **Checked By:** _____ **Approved By:** _____

HARVATEK OPTO-ELECTRONICS (SHENZHEN) CO., LTD.



Harvatek Technical Data Sheet

Part No. : HQ17-2102UWC

Version

A.2

Issued date

2015-10-15

Page

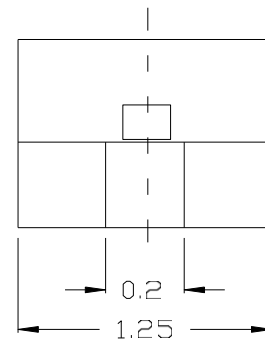
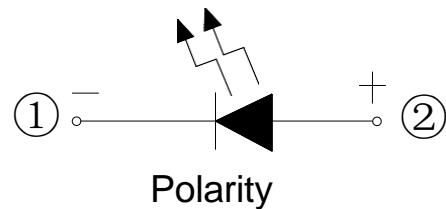
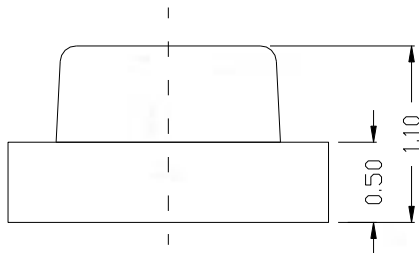
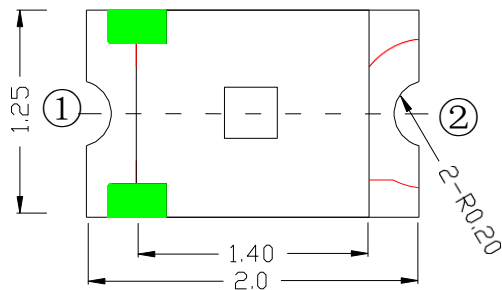
1 of 12

1. Features

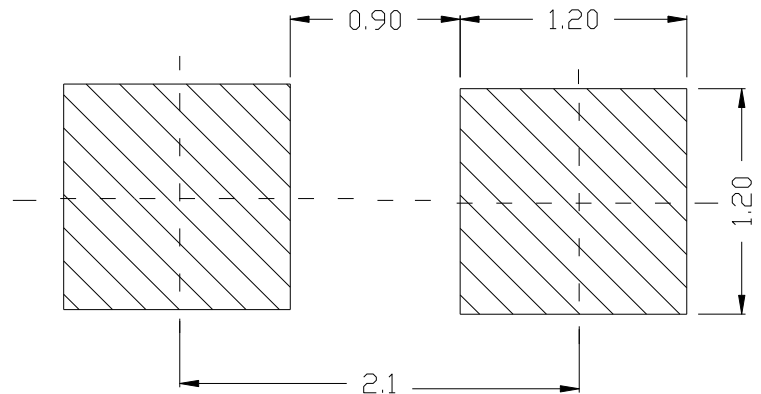
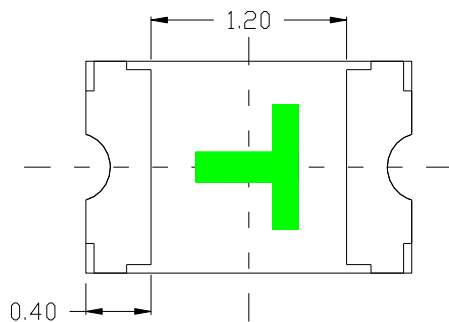
- Package (L/W/H) : 2.0 × 1.25 × 1.1mm
- Color : Ultra Bright White
- Lens: Yellow Diffuse Flat Mold
- EIA STD Package
- Meet ROHS, Green Product
- Compatible With SMT Automatic Equipment
- Compatible With Infrared Reflow Solder Process

2. Package Profile & Soldering PAD Suggested

Package Profile:



Soldering PAD Suggested:

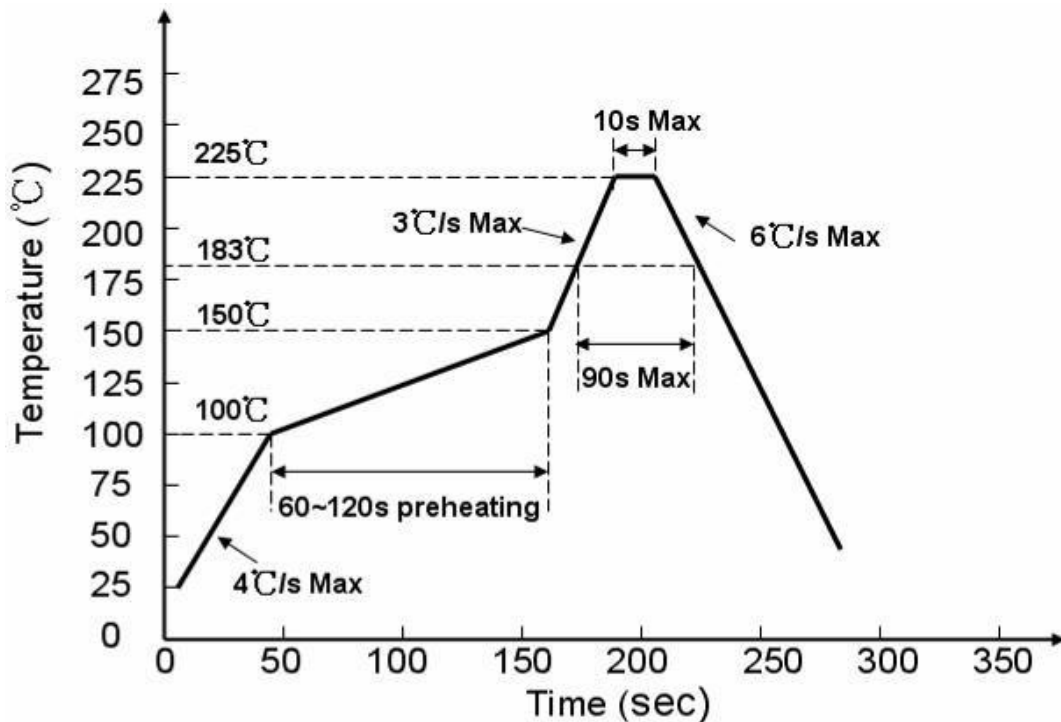


- Notes: 1. All dimensions are in millimeters ;
2. Tolerance is ± 0.10 mm unless otherwise noted.

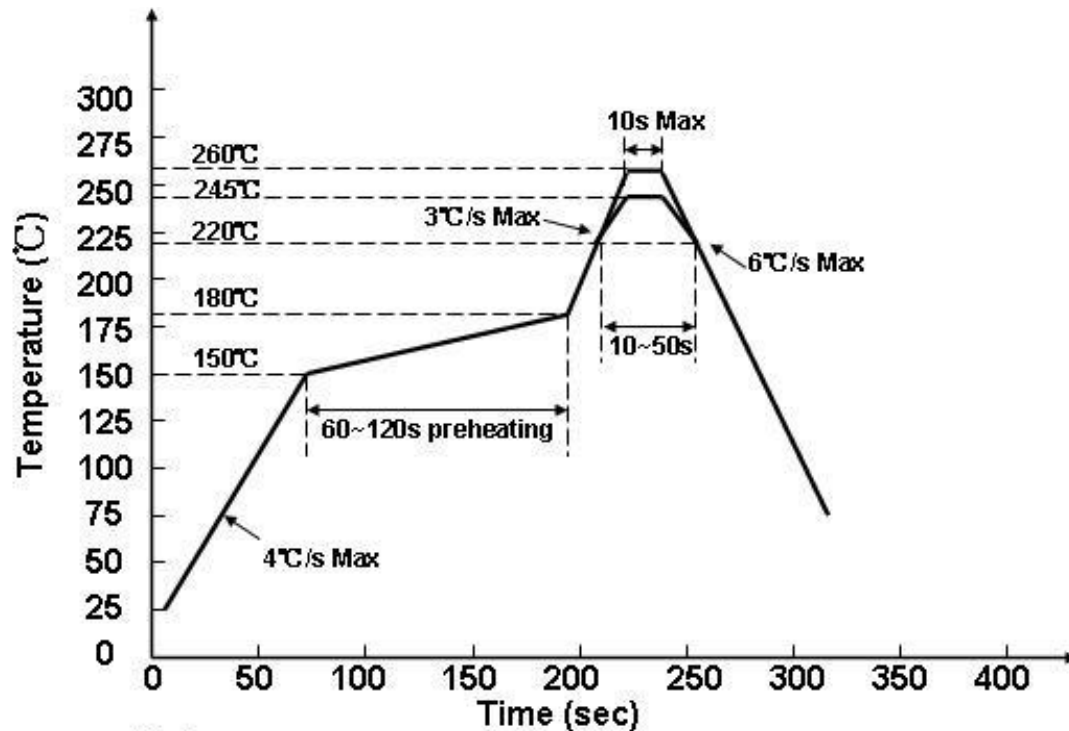


3. Soldering Profile Suggested

3.1、 For Lead Solder



3.2、 For Lead Free Solder



Notes:

We recommend the soldering temperature $245 \pm 5^\circ\text{C}$;

The maximum temperature should be limited to 260°C .



Harvatek Technical Data Sheet

Part No. : HQ17-2102UWC

Version

A.2

Issued date

2015-10-15

Page

3 of 12

4. Absolute Maximum Ratings At Ta=25°C

Parameter	Symbol	Rating	Unit
Power Dissipation	Pd	75	mW
Peak Forward Current (1/10 Duty Cycle, 0.1ms Pulse Width)	IFP	100	mA
DC Forward Current	IF	25	mA
Reverse Voltage	VR	5	V
Operating Temperature Range	Topr	-30°C ~ +85°C	
Storage Temperature Range	Tstg	-40°C ~ +90°C	
Soldering Condition	Tsol	Reflow soldering : 260°C For 5 Seconds Hand soldering: 300°C For 3 Seconds	
ESD CLASS	ESD	2000	V



Harvatek Technical Data Sheet

Part No. : HQ17-2102UWC

Version

A.2

Issued date

2015-10-15

Page

4 of 12

5. Electrical Optical Characteristics At Ta=25°C

Parameter	Symbol	Min.	Typ.	Max.	Unit	Test Condition
Luminous Intensity	IV		--230-		mcd	IF = 5mA
Viewing Angle	2θ1/2	---	120	---	deg	IF = 5mA
CIE 1931 Coordinate	X/Y	---	X:0.37 Y:0.37	---		IF=5mA
Color Temperature	CCT	--3525-		--4500-	K	IF=5mA
Forward Voltage	VF	2.7	---	3.1	V	IF=5mA
Reverse Current	IR	---	---	5	uA	VR=5V

- Notes: 1. Luminous intensity is measured with a light sensor and filter combination that approximates the CIE eye-response curve.
2. $\theta_{1/2}$ is the off-axis angle at which the luminous intensity is half the axial luminous intensity.
3. The dominant wavelength, λ_d is derived from the CIE chromaticity diagram and represents the single wavelength which defines the color of the device.



Harvatek Technical Data Sheet

Part No. : HQ17-2102UWC

Version

A.2

Issued date

2015-10-15

Page

5 of 12

6. General Characteristics

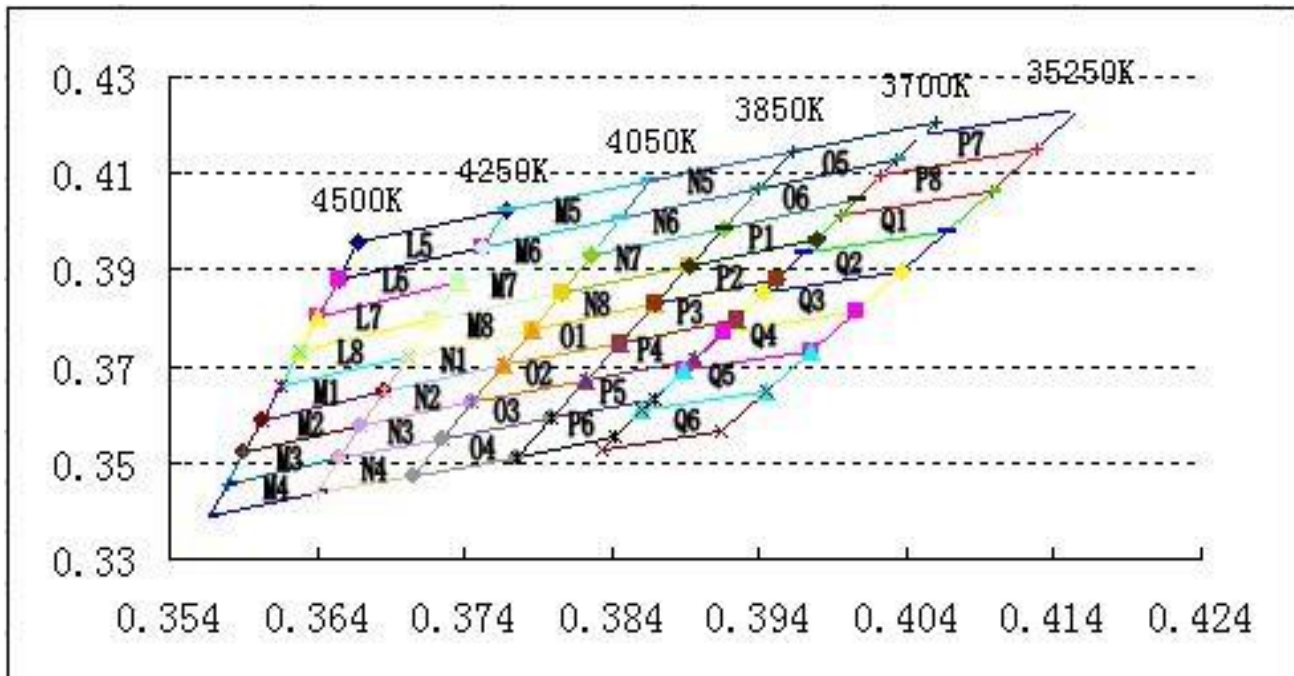
Bin Range of Luminous Intensity

Bin	Min	Max	Unit	Condition
L2	140	180	mcd	IF=5mA
M1	180	230		
M2	230	285		
N1	285	350		
N2	350	450		

Bin Range of Forward Voltage

Bin	Min	Max	Unit	Condition
5B	2.7	2.8	V	IF=5mA
6A	2.8	2.9		
6B	2.9	3.0		
7A	3.0	3.1		

Chromaticity Coordinate Groups



Bin Code	CIE-X	CIE-Y	Bin Code	CIE-X	CIE-Y	Bin Code	CIE-X	CIE-Y	Bin Code	CIE-X	CIE-Y
L5	0.3668	0.3957	M7	0.3736	0.3874	O1	0.3786	0.3777	P5	0.3822	0.367
	0.3655	0.3881		0.3719	0.3798		0.3766	0.3701		0.3799	0.3591
	0.3753	0.3948		0.3806	0.3854		0.3846	0.375		0.387	0.3634



Harvatek Technical Data Sheet

Part No. : HQ17-2102UWC

Version

A.2

Issued date

2015-10-15

Page

6 of 12

	0.3769	0.4022		0.3826	0.3931		0.3869	0.3829		0.3897	0.3716
L6	0.3655	0.3881	M8	0.3719	0.3798	O2	0.3766	0.3701	P6	0.3799	0.3591
	0.3641	0.3804		0.3702	0.3722		0.3746	0.3624		0.3775	0.3511
	0.3736	0.3874		0.3786	0.3777		0.3822	0.367		0.3842	0.3552
	0.3753	0.3948		0.3806	0.3854		0.3846	0.375		0.387	0.3634
L7	0.3641	0.3804	N1	0.3702	0.3722	O3	0.3746	0.3624	P7	0.405	0.4179
	0.3628	0.3732		0.3686	0.365		0.3726	0.3548		0.4023	0.4097
	0.3719	0.3798		0.3766	0.3701		0.3799	0.3591		0.4128	0.4149
	0.3736	0.3874		0.3786	0.3777		0.3822	0.367		0.4158	0.4232
L8	0.3628	0.3732	N2	0.3686	0.365	O4	0.3726	0.3548	P8	0.4023	0.4097
	0.3615	0.3659		0.367	0.3578		0.3706	0.3471		0.3996	0.4015
	0.3702	0.3722		0.3746	0.3624		0.3775	0.3511		0.4097	0.4065
	0.3719	0.3798		0.3766	0.3701		0.3799	0.3591		0.4128	0.4149
M1	0.3615	0.3659	N3	0.367	0.3578	O5	0.3963	0.4145	Q1	0.3996	0.4015
	0.3603	0.359		0.3655	0.3509		0.394	0.4066		0.397	0.3934
	0.3686	0.365		0.3726	0.3548		0.4033	0.4126		0.4067	0.3982
	0.3702	0.3722		0.3746	0.3624		0.406	0.4208		0.4097	0.4065
M2	0.3603	0.359	N4	0.3655	0.3509	O6	0.394	0.4066	Q2	0.397	0.3934
	0.359	0.3521		0.364	0.344		0.3916	0.3987		0.3943	0.3853
	0.367	0.3578		0.3706	0.3471		0.4006	0.4044		0.4036	0.3898
	0.3686	0.365		0.3726	0.3548		0.4033	0.4126		0.4067	0.3982
M3	0.359	0.3521	N5	0.3866	0.4085	P1	0.3916	0.3987	Q3	0.3943	0.3853
	0.3579	0.3455		0.3846	0.4008		0.3893	0.3908		0.3916	0.3772
	0.3655	0.3509		0.394	0.4066		0.3979	0.3962		0.4006	0.3815
	0.367	0.3578		0.3963	0.4145		0.4006	0.4044		0.4036	0.3898
M4	0.3579	0.3455	N6	0.3846	0.4008	P2	0.3893	0.3908	Q4	0.3916	0.3772
	0.3567	0.3389		0.3826	0.3931		0.3869	0.3829		0.3889	0.369
	0.364	0.344		0.3916	0.3987		0.3952	0.388		0.3975	0.3731
	0.3655	0.3509		0.394	0.4066		0.3979	0.3962		0.4006	0.3815
M5	0.3769	0.4022	N7	0.3826	0.3931	P3	0.3869	0.3829	Q5	0.3889	0.369
	0.3753	0.3948		0.3806	0.3854		0.3846	0.375		0.3861	0.3608
	0.3846	0.4008		0.3893	0.3908		0.3925	0.3798		0.3945	0.3648
	0.3866	0.4085		0.3916	0.3987		0.3952	0.388		0.3975	0.3731
M6	0.3753	0.3948	N8	0.3806	0.3854	P4	0.3846	0.375	Q6	0.3861	0.3608
	0.3736	0.3874		0.3786	0.3777		0.3822	0.367		0.3833	0.3526
	0.3826	0.3931		0.3869	0.3829		0.3897	0.3716		0.3914	0.3564
	0.3846	0.4008		0.3893	0.3908		0.3925	0.3798		0.3945	0.3648

Notes: Tolerance of the CIE X,Y : +/-0.005



7. Typical Electrical-Optical Characteristics Curves

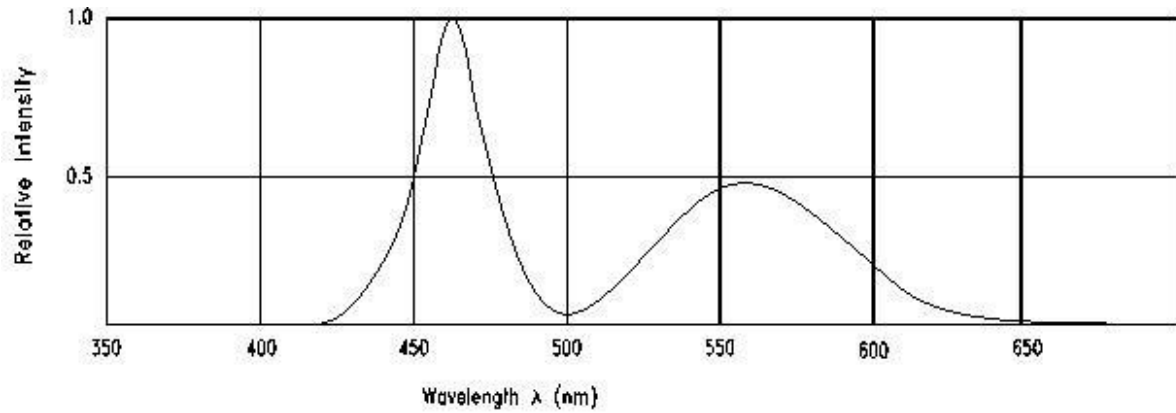


Fig.1 Relative Intensity vs. Wavelength

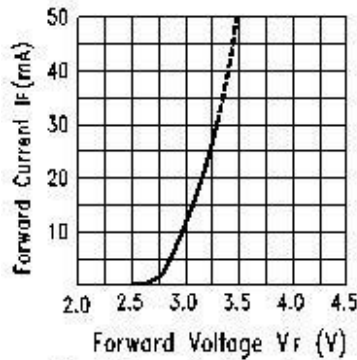


Fig.2 Forward Current vs. Forward Voltage

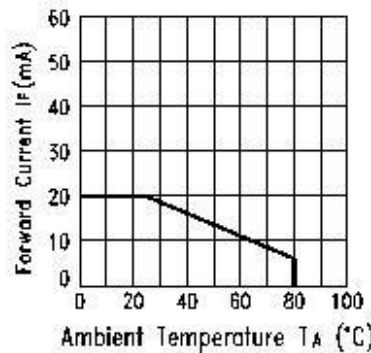


Fig.3 Forward Current Derating Curve

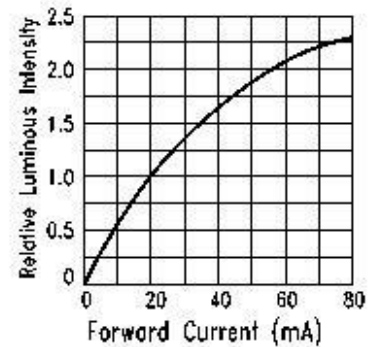


Fig.4 Relative Luminous Intensity vs. Forward Current

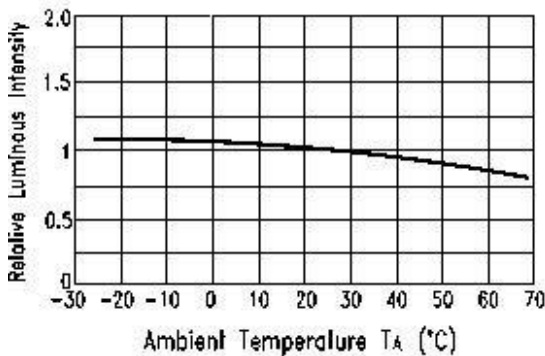


Fig.5 Luminous Intensity vs. Ambient Temperature

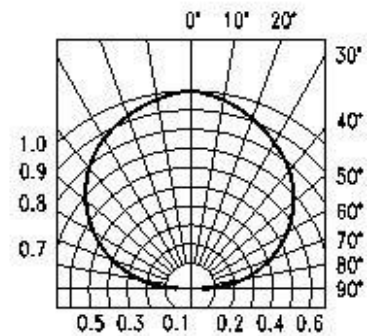


Fig.6 Spatial Distribution



Harvatek Technical Data Sheet

Part No. : HQ17-2102UWC

Version

A.2

Issued date

2015-10-15

Page

8 of 12

8. Label Explanation

CAT: Luminous Intensity Rank (unit : mcd)

HUE: CIE 1931 Coordinate Rank

REF: Forward Voltage Rank (unit : V)

Rank Tolerance:

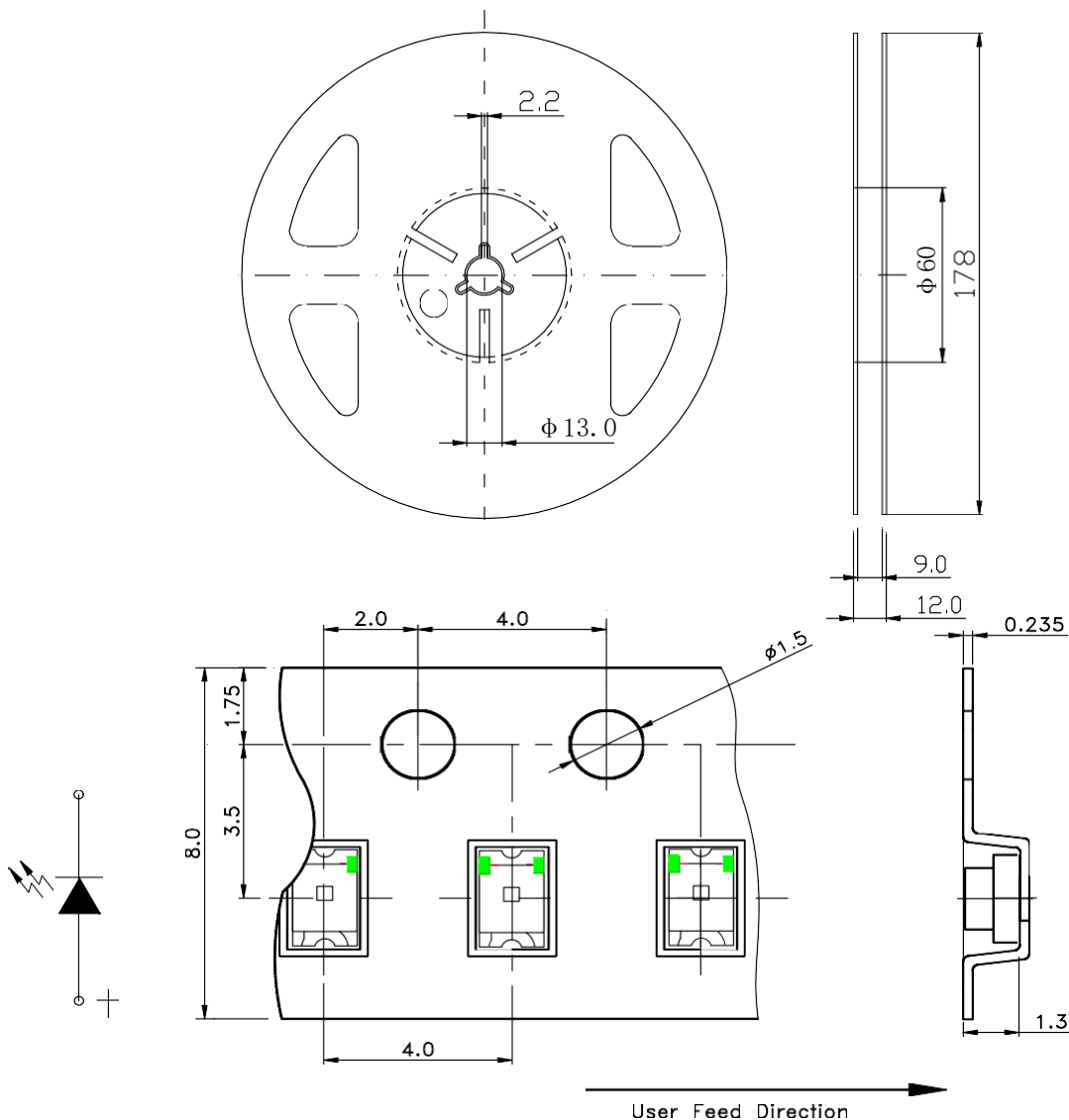
a. Luminous Intensity: $\pm 11\%$

b. HUE: ± 0.005

c. Forward Voltage: $\pm 0.02V$



9. Reel And Tape Dimensions:



- Notes: 1. All dimensions are in millimeters ;
2. Tolerance is ± 0.1 mm unless otherwise noted.



Harvatek Technical Data Sheet

Part No. : HQ17-2102UWC

Version

A.2

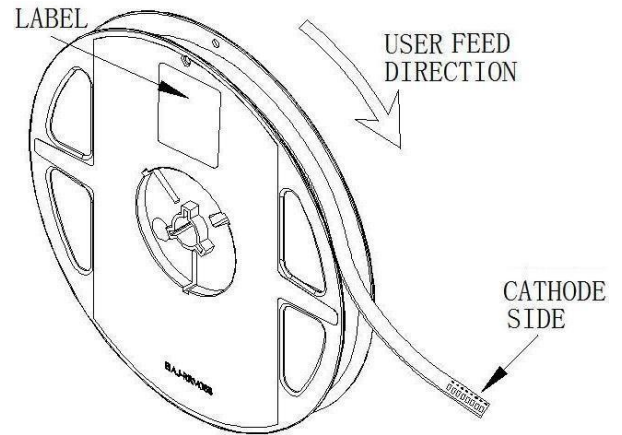
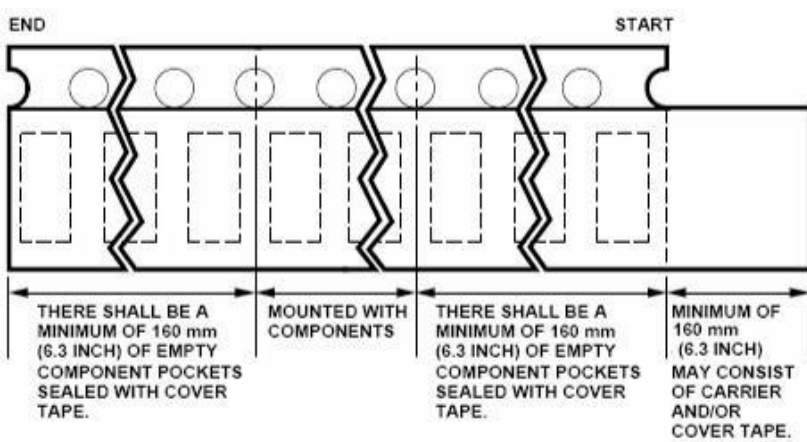
Issued date

2015-10-15

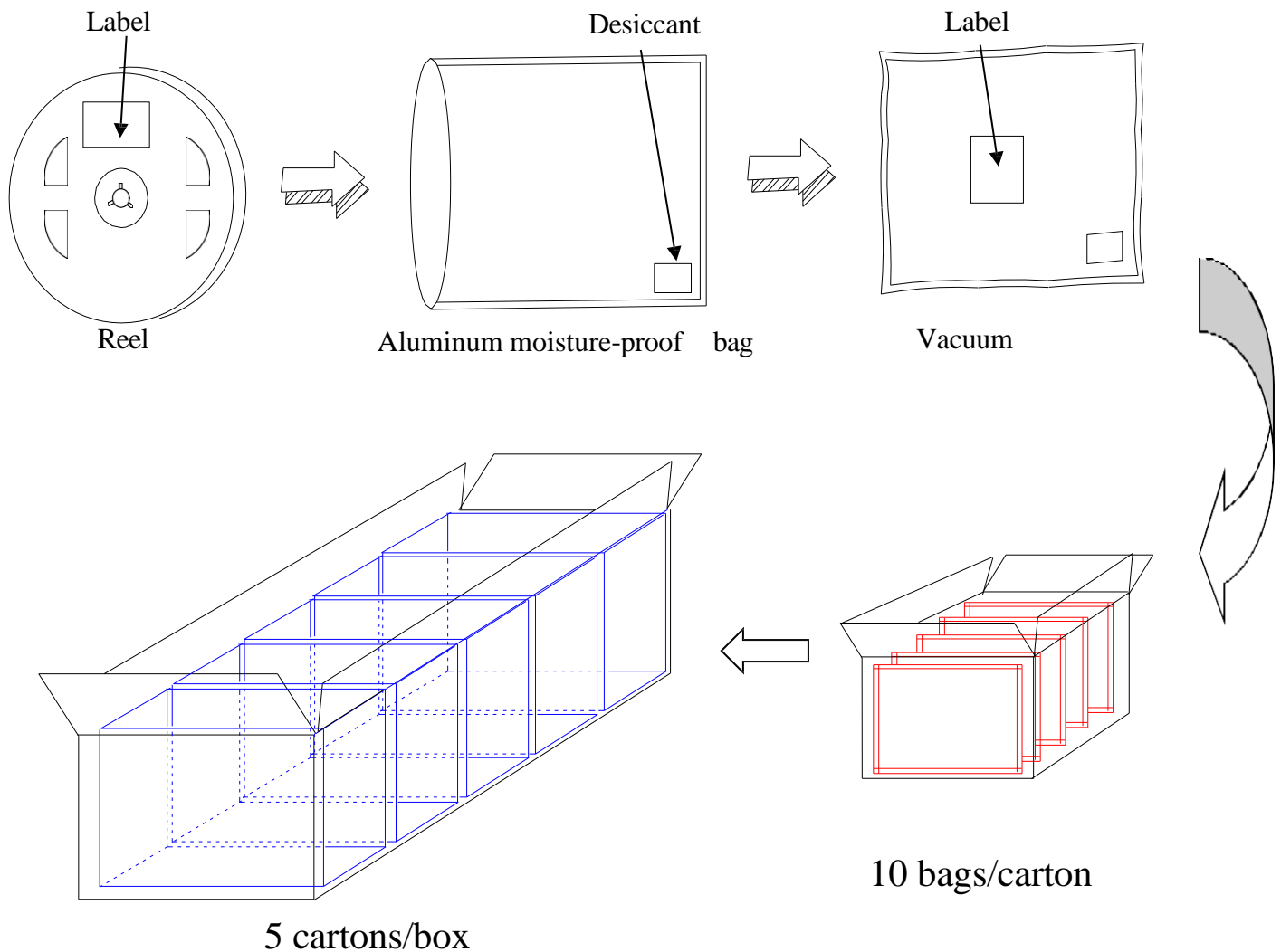
Page

9 of 12

10. Tape Leader & Trailer Dimensions And Reel



11. Packaging:





Harvatek Technical Data Sheet

Part No. : HQ17-2102UWC

Version

A.2

Issued date

2015-10-15

Page

10 of 12

12. Reliability Test

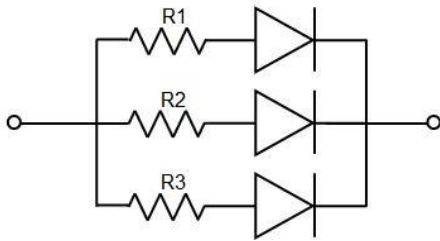
Classification	Test Item	Test Condition	Reference Standard	Reference Standard
Endurance Test	Operation Life	Ta= Under Room Temperature As Per Data Sheet Maximum Rating	1000HRS (-24HRS,+72HRS)*@20mA	MIL-STD-750D:1026 MIL-STD-883D:1005 JIS C 7021:B-1
	High Temperature, High Humidity Storage	IR-Reflow In-Board, 2 Times Ta=85±5°C,RH= 85%	1000HRS±2HRS	JESD22-A101
	High Temperature Storage	Ta= 105±5°C	1000HRS (-24HRS,+72HRS)	MIL-STD-883D:1008 JIS C 7021:B-10
	Low Temperature Storage	Ta= -55±5°C	1000HRS (-24HRS,+72HRS)	JIS C 7021:B-12
Environmental Test	Temperature Cycling	105°C ~ 25°C ~ -55°C ~ 25°C 30mins 5mins 30mins 5mins	10 Cycles	MIL-STD-202F:107D MIL-STD-750D:1051 MIL-STD-883D:1010 JIS C 7021:A-4
	Thermal Shock	IR-Reflow In-Board, 2 Times 85 ± 5°C ~ -40°C ± 5°C 10mins 10mins	10 Cycles	MIL-STD-202F:107D MIL-STD-750D:1051 MIL-STD-883D:1011
	Solder Resistance	T.sol= 260 ± 5°C	10 ± 1secs	MIL-STD-202F:210A MIL-STD-750D:2031 JIS C 7021:A-1
	IR-Reflow Normal Process	Ramp-up rate(183°C to Peak)+3°C/ second max Temp. maintain at 125(±25)°C 120 seconds max Temp. maintain above 183°C 60-150 seconds Peak temperature range 235°C+5/-0°C Time within 5°C of actual Peak Temperature (tp) 10-30 seconds Ramp-down rate +6°C/second max	-----	MIL-STD-750D:2031.2 J-STD-020C
	IR-Reflow Pb Free Process	Ramp-up rate(217°C to Peak)+3°C/ second max Temp. maintain at 175(±25)°C 180 seconds max Temp. maintain above 217°C 60-150 seconds Peak temperature range 260°C+0/-5°C Time within 5°C of actual Peak Temperature (tp) 20-40 seconds Ramp-down rate +6°C/second max	-----	MIL-STD-750D:2031.2 J-STD-020C
	Solderability	T.sol= 235 ± 5°C Immersion rate 25±2.5 mm/sec Coverage ≧ 95% of the dipped surface	Immersion time 2±0.5 sec	MIL-STD-202F:208D MIL-STD-750D:2026 MIL-STD-883D:2003 IEC 68 Part 2-20 JIS C 7021:A-2



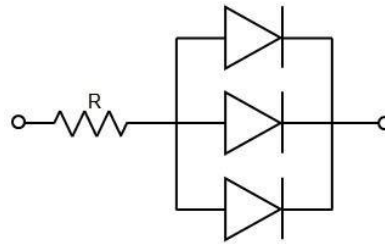
12. Cautions

Application

1. A LED is a current-operated device. The slight shift of voltage will cause big change of current, which will damage LEDs. Customer should use resistors in series for the Over-Current-Proof.
2. In order to ensure intensity uniformity on multiple LEDs connected in parallel in an application, it is recommended to use individual resistor separately, as shown in Circuit A below. The brightness of each LED shown in Circuit B might appear difference due to the differences in the I-V characteristics of those LEDs.



Circuit model A



Circuit model B

3. High temperature may reduce LEDs' intensity and other performances, so keeping it away from heat source to get good performance is necessary.

Storage

1. Before opening original package, it is recommended to store them in the following environment:
Temperature: 5°C~30°C; Humidity: 85%RH max. When the inventory over 2months, Should be done before treatment using dehumidification, Temperature: 60°C/8 hours.
2. After opening original package, the storage ambient for the LEDs should be in 5~30°C temperature and 60% or less relative humidity.
3. In order to avoid moisture absorption, it is recommended that the LEDs that out of the original package should be stored in a sealed container with appropriate desiccant, or in desiccators with nitrogen ambient.
4. The LEDs should be used within 168hrs (7 days) after opening the package. Once been mounted, soldering should be quick.
5. If the moisture absorbent material (silica gel) has faded away or the LEDs stored out of original package for more than 168hrs (7 days), baking treatment should be performed using the conditions:
60°C at least 24 hours.

ESD (Electrostatic Discharge)-Protection

A LED (especially the Blue、 White and Green product) is an ESD sensitive component, and static electricity or power surge will damage the LED. ESD-damaged LEDs will exhibit abnormal characteristics such as high reverse leakage current, low forward voltage, or “no light-up” at low currents, etc.

Some advice as below should be noticed:



Harvatek Technical Data Sheet

Part No. : HQ17-2102UWC

Version

A.2

Issued date

2015-10-15

Page

12 of 12

1. A conductive wrist strap or anti-electrostatic glove should be worn when handling these LEDs.
2. All devices, equipment, machinery, work tables and storage racks, etc. must be properly grounded (Grounding impedance value within 10Ω).
3. Use anti-static package or boxes to carry and storage LEDs. And ordinary plastic package or boxes is forbidden to use.
4. Use ionizer to neutralize the static charge during handling or operating.
5. All surfaces and objects within 1 ft close to LEDs measure less than 100V.

Cleaning

Use alcohol-based cleaning solvents such as IPA (isopropyl alcohol) to clean LEDs if necessary.

Soldering

1. Soldering condition refer to the draft "Soldering Profile Suggested" on page 1.
2. Reflow soldering should not be done more than 2 times.
3. Manual soldering is only suggested on repair and rework. The maximum soldering temperature should not exceed 300°C within 3 sec. And the maximum capacity of soldering iron is 30W in power.
4. During the soldering process, do not touch the lens at high temperature.
5. After soldering, any mechanical force on the lens or any excessive vibration shall not be accepted to apply, also the circuit board shall not be bent as well.

Others

1. The LEDs described here are intended to be used for ordinary electronic equipment (such as office equipment, communication equipment and household applications). Consult Harvatek's Sales in advance for the applications in which exceptional reliability is required, particularly when the failure or malfunction of the LEDs may directly jeopardize life or health. (such as in aviation, transportation, traffic control equipment, medical and life support systems and safety devices).
2. The light output from the high luminous intensity LEDs may cause injury to human eyes when viewed directly.
3. The appearance and specifications of the product may be modified for improvement without prior notice.



Harvatek Technical Data Sheet

Part No. : HQ17-2102UWC

Version

A.2

Issued date

2015-10-15

Page

13 of 12