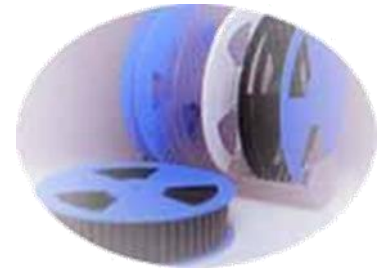


C-Pak Plastic Reels are divided into 4 main types. The first type is a solid piece (moulded) for the 7" and 13" reel. The second type is the ultrasonic welded. The third type is glued reels and is only for 13A7 56mm. The fourth type is using 3-piece latch concept.



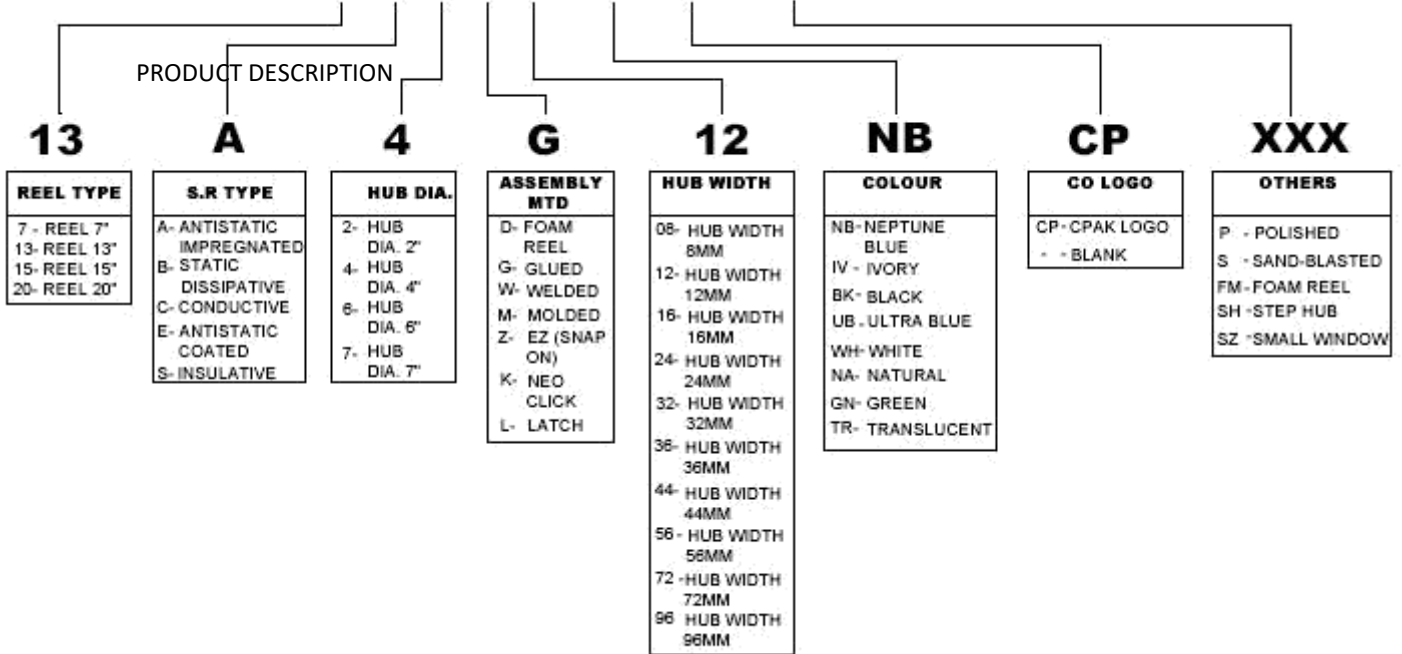
A special locking mechanism enable 2 pieces of 13" flange and hub to be assembled easily. Flanges and hubs are packed in a compact kit format and assembled when needed thus reducing storage space at user's end.

Hubs are available in widths of 8, 12, 16, 24, 32, 44, 56, 72mm and diameter of 2", 4", 6" and 7".

Reels are available in conductive, antistatic, and insulative polystyrene

SPECIFICATION			
Flange Diameter	:7 inch, 13 inch, 20 inch (Robust Reel)		
Hub Diameter	:2 inch, 4 inch, 6 inch, 7 inch		
Hub Width	:8, 12, 16, 24, 32, 44, 56 mm		
	SURFACE RESISTIVITY	SHELF LIFE	COLOUR
Conductive	<10E6 ohms/sq	Indefinite	Black
Static Dissipative	10E6 to 10E11 ohms/sq	Indefinite	Black
Antistatic Coated	<10E12 ohms/sq (RH ≥ 12%)	2 years	Refer to availability of colors in the product description below.
Antistatic Impregnated	<10E12 ohms/sq (RH 50%)	2 years	Refer to availability of colors in the product description below.
Insulative	>10E12 ohms/sq	Indefinite	Refer to availability of colors in the product description below.

## 13 A 4 G12 NB CP /XXX



### PLASTIC REEL 7"

- Material** : Polystyrene
- Title** : 7"(180mm) Plastic Reel (Ø2" Hub)
- Surface Resistivity** : i) <10E6 ohms/sq. (Conductive)  
 ii) 10E6 to 10E11 ohms/sq. (Static Dissipative)  
 iii) <10E12 ohms/sq. (Anti-static)  
 iv) >10E12 ohms/sq. (Insulative)

TAPE SIZE	A MAX	B MIN	C	D MIN	E MIN	W1	N MIN	Assembly Method
08mm	180.0	1.5	13 ±0.2	20.2	4.0	8.4 <sup>+1.5</sup> <sub>-0.0</sub>	60.0	*M
12mm	180.0	1.5	13 ±0.2	20.2	2.5	12.4 <sup>+2.0</sup> <sub>-0.0</sub>	60.0	*M
16mm	180.0	1.5	13 ±0.2	20.2	2.5	16.4 <sup>+2.0</sup> <sub>-0.0</sub>	60.0	*M
24mm	180.0	1.5	13 ±0.2	20.2	2.5	24.4 <sup>+2.0</sup> <sub>-0.0</sub>	60.0	*M

All dimensions in millimeters unless otherwise stated

\*M-Solid Molded

### PLASTIC REEL13"

**Material** :Polystyrene  
**Title** :13"(330mm) Plastic Reel  
 (Ø2" Hub)

**Surface Resistivity** : i) <10E6 ohms/sq. (Conductive)

ii) 10E6 to 10E11 ohms/sq. (Static Dissipative)

iii) <10E12 ohms/sq. (Anti-static)

iv) >10E12 ohms/sq. (Insulative)

TAPE SIZE	A MAX	B MIN	C	D MIN	W1	W2 MAX	N MIN	Assembly Method
08mm	330.0	1.5	13 ±0.2	20.2	8.4 <sup>+1.5</sup> <sub>-0.0</sub>	14.4	62.0	*W
12mm	330.0	1.5	13 ±0.2	20.2	12.4 <sup>+2.0</sup> <sub>-0.0</sub>	18.4	62.0	*W
16mm	330.0	1.5	13 ±0.2	20.2	16.4 <sup>+2.0</sup> <sub>-0.0</sub>	22.4	62.0	*W
24mm	330.0	1.5	13 ±0.2	20.2	24.4 <sup>+2.0</sup> <sub>-0.0</sub>	30.4	62.0	*W
32mm	330.0	1.5	13 ±0.2	20.2	32.4 <sup>+2.0</sup> <sub>-0.0</sub>	38.4	62.0	*W

All dimensions in millimeters unless otherwise stated

\*W-Welded

### PLASTIC REEL13"

**Material** :Polystyrene  
**Title** :13"(330mm) Plastic Reel  
 (Ø4" Hub)

**Surface**  
**Resistivity** : i) <10E6 ohms/sq. (Conductive)

- ii) 10E6 to 10E11 ohms/sq. (Static Dissipative)
- iii) <10E12 ohms/sq. (Anti-static)
- iv) >10E12 ohms/sq. (Insulative)

TAPE SIZE	A MAX	B MIN	C	D MIN	W1	W2 MAX	N MIN	Assembly Method
12mm	330.0	1.5	13 ±0.2	20.2	12.4 +2.0 -0.0	18.4	100.0	*W
16mm	330.0	1.5	13 ±0.2	20.2	16.4 +2.0 -0.0	22.4	100.0	*W
24mm	330.0	1.5	13 ±0.2	20.2	24.4 +2.0	30.4	100.0	*W

32mm	330.0	1.5	13 ±0.2	20.2	-0.0	38.4	100.0	*W
					32.4 +2.0 -0.0			

All dimensions in millimeters unless otherwise stated

\*W-Welded

### PLASTIC REEL13"

**Material** :Polystyrene  
**Title** :13"(330mm) Plastic Reel  
 (Ø4" Hub)

**Surface**  
**Resistivity** : i) <10E6 ohms/sq. (Conductive)

- ii) 10E6 to 10E11 ohms/sq. (Static Dissipative)
- iii) <10E12 ohms/sq. (Anti-static)
- iv) >10E12 ohms/sq. (Insulative)

TAPE SIZE	A MAX	B MIN	C	D MIN	N	W1	W2 MAX	Assembly Method
08mm	330.0	1.5	13 ±0.2	20.2	100.0	8.4 +1.5 -0.0	14.4	*W*M
12mm	330.0	1.5	13 ±0.2	20.2	100.0	12.4 +2.0 -0.0	18.4	*W*M
16mm	330.0	1.5	13 ±0.2	20.2	100.0	16.4 +2.0 -0.0	22.4	*W*M
24mm	330.0	1.5	13 ±0.2	20.2	100.0	24.4 +2.0	30.4	*W*M

32mm	330.0	1.5	13 $\pm 0.2$	20.2	100.0	32.4 $\begin{smallmatrix} +2.0 \\ -0.0 \end{smallmatrix}$	38.4	*W*M
44mm	330.0	1.5	13 $\pm 0.2$	20.2	100.0	44.4 $\begin{smallmatrix} +2.0 \\ -0.0 \end{smallmatrix}$	50.4	*W*M

All dimensions in millimeters unless otherwise stated

\*W-Welded \*M-Molded

## PLASTIC REEL

**Material** : Polystyrene  
**Title** : 13"(330mm) Plastic Reel  
 (Ø4" Hub)

**Surface**

**Resistivity** : i) <10E6 ohms/sq. (Conductive)  
 ii) 10E6 to 10E11 ohms/sq. (Static Dissipative)  
 iii) <10E12 ohms/sq. (Anti-static)  
 iv) >10E12 ohms/sq. (Insulative)

TAPE SIZE	A MAX	B MIN	C	D MIN	N	W1	W2 MAX	Assembly Method
12mm	330.0	1.5	13 $\pm 0.2$	20.2	100.0	12.4 $\begin{smallmatrix} +2.0 \\ -0.0 \end{smallmatrix}$	18.4	*Latch
16mm	330.0	1.5	13 $\pm 0.2$	20.2	100.0	16.4 $\begin{smallmatrix} +2.0 \\ -0.0 \end{smallmatrix}$	22.4	*Latch
24mm	330.0	1.5	13 $\pm 0.2$	20.2	100.0	24.4 $\begin{smallmatrix} +2.0 \\ -0.0 \end{smallmatrix}$	30.4	*Latch
32mm	330.0	1.5	13 $\pm 0.2$	20.2	100.0	32.4 $\begin{smallmatrix} +2.0 \\ -0.0 \end{smallmatrix}$	38.4	*Latch
44mm	330.0	1.5	13 $\pm 0.2$	20.2	100.0	44.4 $\begin{smallmatrix} +2.0 \\ -0.0 \end{smallmatrix}$	50.4	*Latch
56mm	330.0	1.5	13 $\pm 0.2$	20.2	100.0	56.4 $\begin{smallmatrix} +2.0 \\ -0.0 \end{smallmatrix}$	62.4	*Latch
72mm	330.0	1.5	13 $\pm 0.2$	20.2	100.0	72.4 $\begin{smallmatrix} +2.0 \\ -0.0 \end{smallmatrix}$	78.4	*Latch

All dimensions in millimeters unless otherwise stated  
 56 and 72mm hub is connected by hub joint

\*Latch (EZ-Snap On)

**PLASTIC REEL**

**Material** :Polystyrene  
**Title** :13"(330mm) Plastic Reel  
 (Ø4" Hub)

**Surface**  
**Resistivity** : i) <10E6 ohms/sq. (Conductive)

- ii) 10E6 to 10E11 ohms/sq. (Static Dissipative)
- iii) <10E12 ohms/sq. (Anti-static)
- iv) >10E12 ohms/sq. (Insulative)

TAPE SIZE	A MAX	B MIN	C	D MIN	N ±1.0	W1	W2 MAX	W3	Assembly Method
08mm	330.0	1.5	13 <sup>+0.5</sup> <sub>-0.2</sub>	20.2	100.0	8.4 <sup>+1.5</sup> <sub>-0.0</sub>	14.4	8.4 <sup>+2.5</sup> <sub>-0.5</sub>	*Latch
12mm	330.0	1.5	13 <sup>+0.5</sup> <sub>-0.2</sub>	20.2	100.0	13.0 <sup>+2.0</sup> <sub>-0.0</sub>	18.4	12.4 <sup>+3.0</sup> <sub>-0.5</sub>	*Latch
16mm	330.0	1.5	13 <sup>+0.5</sup> <sub>-0.2</sub>	20.2	100.0	17.0 <sup>+2.0</sup> <sub>-0.0</sub>	22.4	16.4 <sup>+3.0</sup> <sub>-0.5</sub>	*Latch
24mm	330.0	1.5	13 <sup>+0.5</sup> <sub>-0.2</sub>	20.2	100.0	25.0 <sup>+2.0</sup> <sub>-0.0</sub>	30.4	24.4 <sup>+3.0</sup> <sub>-0.5</sub>	*Latch
32mm	330.0	1.5	13 <sup>+0.5</sup> <sub>-0.2</sub>	20.2	100.0	33.0 <sup>+2.0</sup> <sub>-0.0</sub>	38.4	32.4 <sup>+3.0</sup> <sub>-0.5</sub>	*Latch

All dimensions in millimeters unless otherwise stated

\*Latch (2PC)

**PLASTIC REEL**

**Material** :Polystyrene  
**Title** :13"(330mm) Plastic Reel  
 (Ø6" & Ø7" Hub)

**Surface**  
**Resistivity** : i) <10E6 ohms/sq. (Conductive)

- ii) 10E6 to 10E11 ohms/sq. (Static Dissipative)
- iii) <10E12 ohms/sq. (Anti-static)
- iv) >10E12 ohms/sq. (Insulative)

TAPE SIZE	A MAX	B MIN	C	D MIN	E MIN	N Ø6" / Ø7"	W1	W2 MAX	Assembly Method
12mm	330.0	1.5	13 ±0.2	20.2	2.5	178.0	12.4 +2.0 -0.0	18.4	*W*M
16mm	330.0	1.5	13 ±0.2	20.2	2.5	178.0	16.4 +2.0 -0.0	22.4	*W*M
24mm	330.0	1.5	13 ±0.2	20.2	2.5	178.0	24.4 +2.0 -0.0	30.4	*W*M
32mm	330.0	1.5	13 ±0.2	20.2	2.5	178.0	32.4 +2.0 -0.0	38.4	*W*M
44mm	330.0	1.5	13 ±0.2	20.2	2.5	152.0 / 178.0	44.4 +2.0 -0.0	50.4	*W*M
56mm	330.0	1.5	13 ±0.2	20.2	2.5	178.0	56.4 +2.0 -0.0	62.4	*G

All dimensions in millimeters unless otherwise stated

\*W-Welded \*M -  
Molded \*G-Glued

## PLASTIC REEL

**Material** : Polystyrene  
**Title** : 13"(330mm) Plastic Reel  
 (Ø7" Hub)

**Surface Resistivity** : i) <10E6 ohms/sq. (Conductive)  
 ii) 10E6 to 10E11 ohms/sq. (Static Dissipative)  
 iii) <10E12 ohms/sq. (Anti-static)  
 iv) >10E12 ohms/sq. (Insulative)

TAPE SIZE	A MAX	B MIN	C	D MIN	E MIN	N Ø6" / Ø7"	W1	W2 MAX	Assembly Method
12mm	330.0	1.5	13.0 +0.5 -0.2	20.2	2.5	178.0	12.4 +2.0 -0.0	18.4	*W
16mm	330.0	1.5	13.0 +0.5 -0.2	20.2	2.5	178.0	16.4 +2.0 -0.0	22.4	*W
24mm	330.0	1.5	13.0 +0.5 -0.2	20.2	2.5	178.0	24.4 +2.0 -0.0	30.4	*W

All dimensions in millimeters unless otherwise stated

\*W-Welded(SZ)

**PLASTIC REEL**

**Material** :Polystyrene  
**Title** :13"(330mm) Plastic Reel  
 (Ø6" Hub)  
**Surface**  
**Resistivity** : i) <10E6 ohms/sq. (Conductive)  
 ii) 10E6 to 10E11 ohms/sq. (Static Dissipative)  
 iii) <10E12 ohms/sq. (Anti-static)  
 iv) >10E12 ohms/sq. (Insulative)

TAPE SIZE	A MAX	B MIN	C	D MIN	N Ø6"	W1	W2 MAX	Assembly Method
44mm	330.0	1.5	13 ±0.2	20.2	152.0	44.4 +2.0 -0.0	50.4	*Latch

All dimensions in millimeters unless otherwise stated

\*Latch (EZ-Snap On)

**PLASTIC REEL**

**Material** :Polystyrene  
**Title** :15"(381mm) Plastic Reel  
 (Ø4" Hub)  
**Surface**  
**Resistivity** : i) <10E6 ohms/sq. (Conductive)  
 ii) 10E6 to 10E11 ohms/sq. (Static Dissipative)  
 iii) <10E12 ohms/sq. (Anti-static)  
 iv) >10E12 ohms/sq. (Insulative)



TAPE SIZE	A MAX	C	D MIN	N Ø4"	W1	W2 MAX	Assembly Method
-----------	-------	---	-------	-------	----	--------	-----------------

12mm	381.0	13 ±0.2	20.2	100.0	12.4 <sup>+2.0</sup> <sub>-0.0</sub>	18.4	*Latch
16mm	381.0	13 ±0.2	20.2	100.0	16.4 <sup>+2.0</sup> <sub>-0.0</sub>	22.4	*Latch
24mm	381.0	13 ±0.2	20.2	100.0	24.4 <sup>+2.0</sup> <sub>-0.0</sub>	30.4	*Latch
32mm	381.0	13 ±0.2	20.2	100.0	32.4 <sup>+2.0</sup> <sub>-0.0</sub>	38.4	*Latch
44mm	381.0	13 ±0.2	20.2	100.0	44.4 <sup>+2.0</sup> <sub>-0.0</sub>	50.4	*Latch
56mm	381.0	13 ±0.2	20.2	100.0	44.4 <sup>+2.0</sup> <sub>-0.0</sub>	50.4	*Latch

All dimensions in millimeters unless otherwise stated  
56mm hub is connected by hub joint

\*Latch (EZ-Snap On)

### PLASTIC REEL

**Material** :Polystyrene  
**Title** :15"(381mm) Plastic Reel (Ø6" Hub)  
**Surface**  
**Resistivity** : i) <10E6 ohms/sq. (Conductive)  
 ii) 10E6 to 10E11 ohms/sq. (Static Dissipative)  
 iii) <10E12 ohms/sq. (Anti-static)  
 iv) >10E12 ohms/sq. (Insulative)

TAPE SIZE	A MAX	C	D MIN	N (Ø6")	W1	W2 MAX	Assembly Method
44mm	381.0	13 ±0.2	20.2	150.0	44.4 <sup>+2.0</sup> <sub>-0.0</sub>	50.4	*Latch
56mm	381.0	13 ±0.2	20.2	150.0	56.4 <sup>+2.0</sup> <sub>-0.0</sub>	62.4	*Latch
72mm	381.0	13 ±0.2	20.2	150.0	72.4 <sup>+2.0</sup> <sub>-0.0</sub>	78.4	*Latch

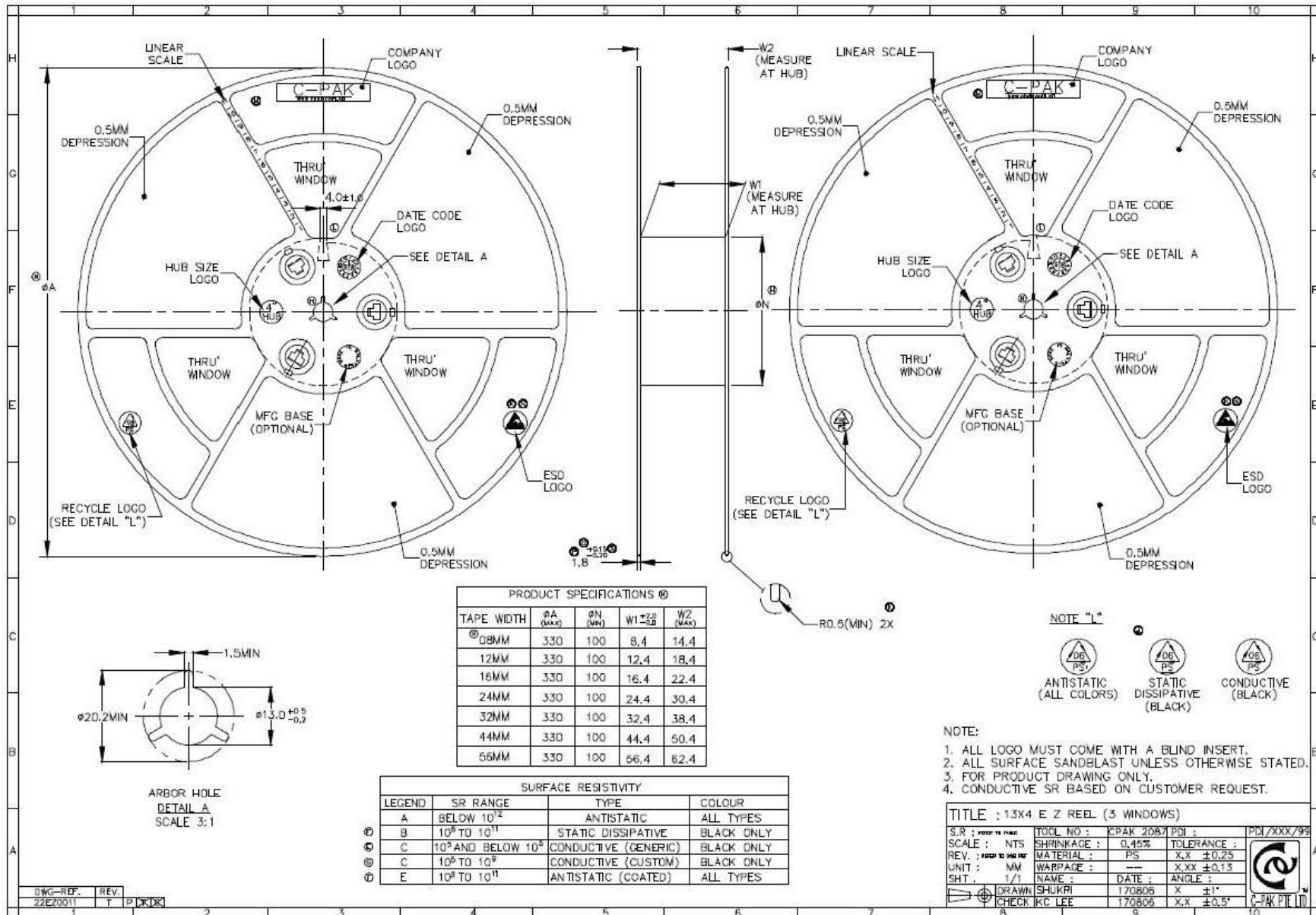
All dimensions in millimeters unless otherwise stated

\*Latch (Neo-Click)

**PLASTIC REEL**

Material : Styrenic Alloy  
 Title : 20" (508mm) Plastic Reel  
           (Ø6" Hub)  
 Surface  
 Resistivity : i) <10E12 ohms/sq. (Anti-static)

TAPE SIZE	A +/-1.0	C	N (Ø6")	W1 +/-1.0	W2 MAX	W3 +5.0 -1.0	Assembly Method
96mm	508.0	25.5 +0.3 -0.0	152.0	96.0	109	96.0	*Glued
96mm	508.0	76.5 +0.2 -0.0	152.0	96.0	109	96.0	*Glued
All dimensions in millimeters unless otherwise stated							*G-Glued



**Gocar** Electronic 